



NKHOTAKOTA  
POTTERY LODGE

Dear Guests,

Welcome to Nkhotakota Pottery Lodge! We are delighted to serve you in our restaurant situated at one of the most beautiful shores in Malawi. Since 2016 Pottery Lodge is under new Management that has made it their aim to create a warm but professional family atmosphere that meets the needs of our guests. All our staff members are here to make your stay pleasant and unforgettable.

**About our Restaurant:** We aim to use as many locally grown ingredients possible. Therefore, we created our own garden to grow vegetables, herbs and fruits. Additionally, we are supporting the creation of a community garden that is being taken care of by selected community members from our village. Every meal ordered is supporting and contributing to our aim of buying and producing ingredients in our community at Nkhandwe village.

**Availability of Meals:** Due to different seasons, market availability and our geographical location it is not always possible for us to have all our ingredients well stocked. Therefore, we kindly ask our guests for their understanding. Your waiter will inform you accordingly.

**Waiting times and advance orders:** All our meals are freshly prepared. Therefore, we kindly ask you to consider a waiting time of **approximately 45min**. Would you like to dine at a specific time or are you a large group? To ensure that your meals are being prepared in time please make sure to order well in advance. You can do that via WhatsApp or Phone call.

Customer Feedback is the breakfast for all champions!

We would appreciate if you could inform other guests about your stay at Nkhotakota Pottery Lodge:





NKHOTAKOTA  
POTTERY LODGE

# SNACKS

## CHICKEN WINGS

15,000 MWK

## CHICKEN GIZZARDS

15,000MWK

## CHICKEN HEARTS

15,000 MWK

## SWEET POTATOE

9,750 MWK

## BEEF SAMOOSA

15,000 MWK

## VEGGY SAMOOSA

15,000 MWK

## COW'S HUMP "NELUNDA"

15,000 MWK

## SAUSAGE SNACK

15,000 MWK

## DRUM STICKS

15,000 MWK

**Restaurant hours**

6AM-9PM



NKHOTAKOTA  
POTTERY LODGE

# STARTERS

## SOUP

Vegetable Soup-----	11,000 MWK
Mushroom Soup-----	11,000 MWK
Onion Soup-----	11,000 MWK
Chicken Noodle Soup-----	11,000 MWK
Potatoe Carrot Soup-----	11,000 MWK
Ginger Carrot Soup-----	11,000 MWK
Tomatoe Soup-----	11,000 MWK
Hot & Sour Soup-----	11,000 MWK
Pumkin Soup-----	11,000 MWK

## SALAD

Mixed Salad-----	11,250MWK
Tuna and Egg Salad-----	16,500MWK
Potato Salad-----	11,250 MWK
Greek Salad-----	16,750 MWK
Coleslaw Salad-----	12,000 MWK
ChickenSalad-----	20,000 MWK

**Restaurant Hours**

6AM-9PM



NKHOTAKOTA  
POTTERY LODGE

# MAIN COURSES

MAIN COURSES CAN BE SERVED WITH: RICE, CHIPS, NSIMA, KONDOLE BOILED POTATOES, MASHED POTATOES OR CHAPATI.

## CHICKEN

### Chicken Kwasu-Kwasu

ON THE BONE CHICKEN PIECES INFUSED WITH HOMEMADE MARINADE AND COLORFUL VEGETABLE CHUNKS.

**27,000 MWK**

### Chicken Burger

BURGER IN A BREAD ROLL LAID ON A BED OF LETTUCE, TOMATO, ONION AND CUCUMBER. THIS DISH IS SERVED WITH A DELICIOUS SIDE SALAD AND CRUNCHY CHIPS.

**25,000 MWK**

### Spaghetti Straganof

PASTA WITH CHICKENBREAST STRIPES IN CREAM SAUCE AND FRESH VEGETABLES.

**27,000MWK**

### 1/4 Fried Chicken

ON THE BONE CHICKEN INFUSED WITH HOMEMADE MARINADE SERVED WITH A DELICIOUS SALAD AND

CRUNCHY CHIPS.

**25,000 MWK**

### Tropical Chicken Curry

CHICKEN FILLET IN A MOUTHWATERING CURRY WITH JUICY PINEAPPLE PIECES. LET YOUR WAITER KNOW HOW SPICY THE CHEF CAN PREPARE THIS MEAL FOR YOU.

**27,000MWK**

### Sweet Chicken

CHICKEN ON THE BONE MARINATED WITH OUR HOMEMADE MARINADE TOPPED WITH HONEY.

**27,000 MWK**

### Chicken Thyme

CHICKEN ON THE BONE INFUSED WITH FRESH THYME (IF AVAILABLE) AND A HOME MARINADE.

**27,000 MWK**

**Restaurant Hours**

6AM-9PM





NKHOTAKOTA  
POTTERY LODGE

# MAIN COURSES

MAIN COURSES CAN BE SERVED WITH: RICE,  
CHIPS, NSIMA, KONDOLÉ BOILED POTATOES,  
MASHED POTATOES OR CHAPATI.

## CHICKEN

### Chicken Kebab

CHICKEN FILLET PIECES INFUSED WITH HOMEMADE  
MARINADE ON A SPIKE WITH COLORFUL VEGGIES.

**27,000 MWK**

### Chicken Wrap

FRIED CHICKEN BREAST FILLET STRIPES AND  
SEASONAL VEGETABLES IN A HOMEMADE WRAP WITH  
SALAD AND CHIPS.

**27,000 MWK**

### Chicken Nuggets

FRIED CHICKEN BREAST PIECES BREADED AND SERVED  
WITH AN EXOTIC DIP AND A SIDE DISH OF YOUR  
CHOICE.

**27,000 MWK**

### Chickem Kiv

OVEN BAKED CHICKEN FILLET STUFFED WITH  
VEGETABLES TOPPED WITH CHEESE IN TOMATO SAUCE  
SERVED WITH A SIDE DISH OF YOUR CHOICE.

**27,000 MWK**

### Que Sadilla

LAYERS OF DELICIOUS CHICKEN FILLET STRIPES,  
VEGETABLES AND CHAPATI BAKED IN THE OVEN.

**27,000 MWK**

### Honey & Mustard Chicken

FRIED CHICKEN PIECES INFUSED WITH SWEET  
HOMEMADE MARINADE WITH COLORFUL VEGGIES.  
SERVED WITH A SIDE DISH OF YOUR CHOICE.

**27,000 MWK**

**Restaurant Hours**  
6AM-9PM



NKHOTAKOTA  
POTTERY LODGE

# MAIN COURSES

MAIN COURSES CAN BE SERVED WITH: RICE, CHIPS, NSIMA, KONDOLÉ BOILED POTATOES, MASHED POTATOES OR CHAPATI.

## BEEF

### T-Bone Steak

A MOUTHWATERING BEEF STEAK ON THE BONE INFUSED WITH HOMEMADE MARINADE SERVED WITH SALAD AND A SIDE DISH OF YOUR CHOICE. LET YOUR WAITER KNOW HOW DONE YOU WISH TO HAVE YOUR STEAK.

**30,000MWK**

### Nkhandwe Steak

A JUICY PIECE OF BONELESS STEAK INFUSED WITH OUR HOMEMADE MARINADE SERVED WITH SALAD AND A SIDE DISH OF YOUR CHOICE.

**30,000MWK**

### Chipi Mince Meat

A DELICIOUS BOLOGNESE SAUCE MADE FROM MINCE-MEAT IN A UNIQUELY SPICED GRAVY. THIS DISH IS USUALLY SERVED WITH SPAGHETTI.

**30,000MWK**

### Spaghetti Bolognese

A HEARTY AND COMFORT ITALIAN CLASSIC. OUR SPAGHETTI BOLOGNESE IS PREPARED WITH PERFECTLY COOKED PASTA TOPPED WITH RICH, SLOW-SIMMERED MEAT SAUCE MADE FROM MINCED BEEF, TOMATO, ONION, GARLIC AND A BLEND OF HERBS AND SPICE

**30,000MWK**

### Beef Burger

BURGER IN A BREAD ROLL LAID ON A BED OF LETTUCE, TOMATO, ONION AND CUCUMBER. THIS DISH IS SERVED WITH A DELICIOUS SIDE SALAD AND CRUNCHY CHIPS.

**30,000MWK**

**Restaurant Hours**  
6AM-9PM



NKHOTAKOTA  
POTTERY LODGE

# MAIN COURSES

MAIN COURSES CAN BE SERVED WITH:  
RICE, CHIPS, NSIMA, KONDOLE  
BOILED POTATOES, MASHED POTATOES OR CHAPATI.

## BEEF

### Beef Fillet

AN UNBELIEVABLE JUICY AND SOFT PIECE OF FINE BEEF FILLET INFUSED WITH OUR HOMEMADE MARINADE SERVED WITH A SIDE DISH OF YOUR CHOICE. LET YOUR WAITER KNOW HOW DONE YOU WISH TO HAVE YOUR FILLET.

**35,000 MWK**

### Beef Stew

BEEF ON THE BONE IN A DELICIOUS SPICY GRAVY SERVED WITH A SIDE DISH OF YOUR CHOICE.

**30,000 MWK**

### Beef Wrap

FRIED BEEF FILLET STRIPES AND SEASONAL VEGETABLES IN A HOMEMADE WRAP WITH SALAD AND CHIPS.

**35,000 MWK**

### Sirlon Steak

A BONELESS BEEF STEAK IN HOMEMADE MARINADE SERVED WITH SALAD AND A SIDE DISH OF YOUR CHOICE. LET YOUR WAITER KNOW HOW DONE YOU WISH TO HAVE YOUR STEAK.

**35,000 MWK**

### Rib-Eye Steak

A DELICIOUS BEEF STEAK FROM THE RIB SECTION IN HOMEMADE MARINADE SERVED WITH SALAD AND A SIDE DISH OF YOUR CHOICE. LET YOUR WAITER KNOW HOW DONE YOU WISH TO HAVE YOUR STAKE

**35,000 MWK**

**Restaurant Hours**  
6AM-9PM



NKHOTAKOTA  
POTTERY LODGE

# MAIN COURSES

MAIN COURSES CAN BE SERVED WITH: RICE,  
CHIPS, NSIMA, KONDOLE BOILED POTATOES,  
MASHED POTATOES OR CHAPATI.

## BEEF

### Pepper Steak

A JUICY PIECE OF STEAK INFUSED WITH  
OUR HOMEMADE PEPPER MARINADE SERVED WITH  
SALAD AND A SIDE DISH OF YOUR CHOICE.

**35,000 MWK**

### Beef Kebab

MOUTHWATERING BEEF FILLET PIECES INFUSED WITH  
HOMEMADE MARINADE ON A PIKE WITH COLORFUL  
VEGGIES.

**35,000 MWK**

### Rump Steak

A BONELESS BEEF STAKE IN HOMEMADE MARINADE  
SERVED WITH SALAD AND A SIDE DISH OF YOUR  
CHOICE. LET YOUR WAITER KNOW HOW DONE YOU  
WISH TO HAVE YOUR STAKE.

**35,000 MWK**

**Restaurant Hours**

6AM-9PM



NKHOTAKOTA  
POTTERY LODGE

# MAIN COURSES

MAIN COURSES CAN BE SERVED WITH: RICE,  
CHIPS, NSIMA, KONDOLE BOILED POTATOES,  
MASHED POTATOES OR CHAPATI.

## FISH

### Medium: Whole Chambo

LAKE MALAWI FISH INFUSED WITH OUR HOMEMADE MARINADE TOPPED WITH A SLICE OF FRESH LOCAL LEMON. PLEASE LET YOUR WAITER KNOW IF YOU WOULD LIKE YOUR FISH TO BE OPEN OR CLOSED, FRIED OR GRILLED.

**35,500 MWK**

### Large: Whole Chambo

THIS DISH WILL TURN YOUR DINNER INTO A UNIQUE EXPERIENCE. OUR LARGE CHAMBO/MCHENI IS INFUSED WITH HOMEMADE MARINADE TOPPED WITH A SLICE OF FRESH LOCAL LEMON. PLEASE LET YOUR WAITER KNOW IF YOU WOULD LIKE YOUR FISH OPEN OR CLOSED, FRIED OR GRILLED.

**42,500 MWK**

### Extra Large: Whole Chambo

Experience the true taste of our Extra Large Chambo, infused with our signature homemade marinade and paired with a slice of fresh Lemon. The fish is prepared with great care by our chef to ensure rich flavour and tender, succulent finish. Please let your Waiter know if you would like your fish open or closed, fried or grilled.

**50,500 MWK**

**Restaurant Hours**

6AM-9PM



NKHOTAKOTA  
POTTERY LODGE

# MAIN COURSES

MAIN COURSES CAN BE SERVED WITH: RICE,  
CHIPS, NSIMA, KONDOLE BOILED POTATOES,  
MASHED POTATOES OR CHAPATI.

## FISH

### Medium: Whole Mcheni

LAKE MALAWI FISH INFUSED WITH OUR  
HOMEMADE MARINADE TOPPED WITH A SLICE OF  
FRESH LOCAL LEMON. PLEASE LET YOUR WAITER  
KNOW IF YOU WOULD LIKE YOUR FISH TO BE OPEN  
OR CLOSED, FRIED OR GRILLED.

**35,500 MWK**

### Large: Whole Mcheni

THIS DISH WILL TURN YOUR DINNER INTO A UNIQUE  
EXPERIENCE. OUR LARGE CHAMBO/MCHENI IS INFUSED  
WITH HOMEMADE MARINADE TOPPED WITH A SLICE OF  
FRESH LOCAL LEMON. PLEASE LET YOUR WAITER  
KNOW IF YOU WOULD LIKE YOUR FISH OPEN OR  
CLOSED, FRIED OR GRILLED.

**42,500 MWK**

### Extra Large: Whole Mcheni

Experience the true taste of Lake Malawi with our  
Extra Large Mcheni, infused with our signature  
homemade marinade and paired with a slice of  
fresh Lemon. The fish is prepared with great care  
by our chef to ensure rich flavour and  
tender, succulent finish. Please let your Waiter  
know if you would like your fish open or closed,  
fried or grilled.

**50,500 MWK**

**Restaurant Hours**

6AM-9PM





NKHOTAKOTA  
POTTERY LODGE

# MAIN COURSES

MAIN COURSES CAN BE SERVED WITH: RICE, CHIPS, NSIMA, KONDOLE BOILED POTATOES, MASHED POTATOES OR CHAPATI.

## FISH

### Fish Fillet

FISH FILLET INFUSED WITH OUR HOMEMADE MARINADE TOPPED WITH A SLICE OF FRESH LOCAL LEMON. LET YOUR WAITER KNOW IF YOU WOULD LIKE TO HAVE YOUR FILLET FRIED OR GRILLED.

**42,500 MWK**

### Fillet Wrapped in Bacon

FISH FILLET INFUSED WITH OUR HOMEMADE MARINADE WRAPPED INTO STRIPS OF BACON AND TOPPED WITH A SLICE OF FRESH LOCAL LEMON. LET YOUR WAITER KNOW IF YOU WOULD LIKE YOUR FILLET TO BE FRIED OR GRILLED.

**46,500 MWK**

### Tilapia Tacos

MALAWI FISH TACOS LOADED WITH FRESH INGREDIENTS AND PIECES OF THE FAMOUS TILAPIA. HOMEMADE SAUCE AND COLORFUL VEGETABLES INCLUDED.

**42,500 MWK**

### Breaded Fish Fillet

FISH FILLET INFUSED WITH OUR HOMEMADE MARINADE DIPPED IN BREAD CRUMBS AND TOPPED WITH A SLICE OF FRESH LOCAL LEMON. LET YOUR WAITER KNOW IF YOU WOULD LIKE YOUR FILLET FRIED OR GRILLED.

**42,500 MWK**

**Restaurant Hours**  
6AM-9PM



NKHOTAKOTA  
POTTERY LODGE

# MAIN COURSES

MAIN COURSES CAN BE SERVED WITH: RICE,  
CHIPS, NSIMA, KONDOLE BOILED POTATOES,  
MASHED POTATOES OR CHAPATI.

## VEGETARIAN

### Vegetable Curry

DELICIOUS VEGETABLE CURRY PACKED WITH ALL KINDS OF LOCAL VEGGIES. OUR UNIQUE SPICING GIVES THIS DISH AN UNFORGETTABLE FLAVOR.

**30,000 MWK**

### Coconut Curry

DELICIOUS COCONUT CURRY IS PACKED WITH MANY LOCAL VEGGIES DEPENDING ON THE SEASON AND COOKED IN A CREAMY COCONUT MILK. OUR UNIQUE SPICING GIVES THIS DISH THE FINAL TOUCH. LET YOUR WAITER KNOW WHICH SIDE DISH YOU WISH TO HAVE WITH THIS MEAL.

**30,000 MWK**

### Okra Curry

THIS CURRY IS PREPARED WITH LOCALLY FOUND OKRA COOKED WITH CORIANDER AND MASALA. LET YOUR WAITER KNOW WHICH SIDE DISH YOU WISH TO HAVE WITH THIS MEAL.

**30,000 MWK**

### Vegetable Quiche

PASTRY CRUST FILLED WITH DELICIOUS VEGETABLES AND EGG, TOPPED WITH GOUDA CHEESE AND BAKED.

**30,000 MWK**

### Vegetable Wrap

DELICIOUS VEGETABLES IN A HOMEMADE WRAP SERVED WITH SALAD AND A SIDE DISH OF YOUR CHOICE.

**30,000 MWK**

### Vegetable Moussaka

LAYERS OF ROASTED VEGETABLE WITH A CHUNKY TOMATO SAUCE, TOPPED WITH CREAMY BECHAMEL SAUCE AND CHEESE.

**30,000 MWK**

**Restaurant Hours**

6AM-9PM



NKHOTAKOTA  
POTTERY LODGE

# MAIN COURSES

MAIN COURSES CAN BE SERVED WITH: RICE, CHIPS,  
NSIMA, KONDOLÉ BOILED POTATOES,  
MASHED POTATOES OR CHAPATI.

## OTHER

### Lamb Chops

TENDER PIECES OF LAMB CHOP IN HOMEMADE  
MARINADE SERVED WITH A SIDE DISH OF YOUR CHOICE.

**35,000 MWK**

### Pork Chops

TENDER PIECES OF PORK CHOPS IN HOMEMADE  
MARINADE SERVED WITH A SIDE DISH OF YOUR CHOICE.

**32,000 MWK**

### Pork Fillet

BEST QUALITY PORK FILLET IN HOMEMADE MARINADED  
SAUCE AND SERVED WITH A SIDE DISH OF YOUR  
CHOICE.

**35,000 MWK**

### Oxtail with beans

DELICIOUS LOCAL BEANS IN A TOMATO ONION GRAVY  
WITH SOFT OXTAIL PIECES WITH A SIDE DISH OF YOUR  
CHOICE.

**30,000 MWK**

### Mang'ina

STEWED COW TROTTERS IN A DELICIOUS SAUCE SERVED  
WITH A SIDEDISH OF YOUR CHOICE.

**25,000 MWK**

### Goat Stew

GOAT ON THE BONE IN A DELICIOUS WELL FLAVORED  
STEW WITH A SIDE DISH OF YOUR CHOICE.

### Bacon Burger

**30,000 MWK**

BURGER IN A BREAD ROLL LAID ON A BED OF LETTUCE,  
TOMATO, ONION, CUCUMBER. BACON. THIS DISH IS SERVED  
WITH A DELICIOUS SIDE SALAD AND CRUNCHY CHIPS.

**30,000 MWK**

**Restaurant Hours**

6AM-9PM



NKHOTAKOTA  
POTTERY LODGE

# HOMEMADE PIZZA

## PIZZA MARGHERITA

TOMATO SAUCE & MOZZARELLA

**30,000 MWK**

## VEGETABLE PIZZA

TOMATO SAUCE, MOZZARELLA & VEGETABLES

**30,000 MW**

## TUNA PIZZA

TOMATO SAUCE, MOZZARELLA, ONION & TUNA

**30,000 MW**

## CHICKEN PIZZA

TOMATO SAUCE, MOZZARELLA, VEGETABLES & CHICKEN  
BREAST STRIPES

**30,000 MW**

## FULLHOUSE PIZZA

TOMATO SAUCE, MOZZARELLA, VEGETABLES & CHICKEN  
BREAST STRIPES

**35,000 MWK**

## BOLOGNESE PIZZA

TOMATO SAUCE, MOZZARELLA, MINCED  
MEAT, ONION & FRESH TOMATO

**30,000 MW**

**Restaurant Hours**

6AM-9PM



NKHOTAKOTA  
POTTERY LODGE

# BREAKFAST

## LIGHT CONTINENTAL

Toast with Butter and Marmalade/Jam and Tea/Coffee

15,500 MWK

## NKHANDWE BREAKFAST

Toast served with Butter and Marmalade/Jam. Fruit Salad or Fruit juice, Cereal or Muesli and Tea/Coffee. Children's portion for 15,500MWK

20,000 MWK

## ENGLISH BREAKFAST

Eggs, Sausage, Fried Tomato. Toast with Butter, Marmalade/Jam or Honey. Fruit juice or Fruit Salad and Tea/Coffee. Children's portion for 17,500MWK

25,000 MWK

## SAUSAGE AND TOAST

Two Beef or Pork Sausages with Toast and Butter

20,000 MWK

## EGGS AND TOAST

Two Eggs either fried, scrambled or boiled with Toast and Butter

15,000MWK

## PANCAKES

Two Pancakes with Marmalade/Jam or Honey. Extra Fruit Topping for 3,500MWK

15,000MWK

## CHEESE AND TOMATO OMLETTE

Served Chips/Toast and Tea/Coffee

16,500 MWK

## SPANISH OMLETTE

Served Chips/Toast and Tea/Coffee

16,500 MWK

Restaurant Hours

6AM-9PM



NKHOTAKOTA  
POTTERY LODGE

# SWEET CORNER

## DESSERTS

### **Vanilla Cheese Cake • 10,000 MWK**

Served with Vanilla Sauce.

### **Chocolate Cake • 10,000 MWK**

Served with Chocolate Sauce.

### **Carrot Cinnamon Cake • 10,000 MWK**

Served with Karamel Sauce.

### **Apple Crumble Cake • 10,000 MWK**

Served with Custard Sauce.

### **Swiss Role • 10,000 MWK**

Served with Caramel Sauce.

### **Wonder Pancake • 15,500MWK**

Pancake filled with Chocolate Sauce and Fruits, topped with Vanilla Ice-Cream.

### **Vanilla Ice Cream • 10,000 MWK**

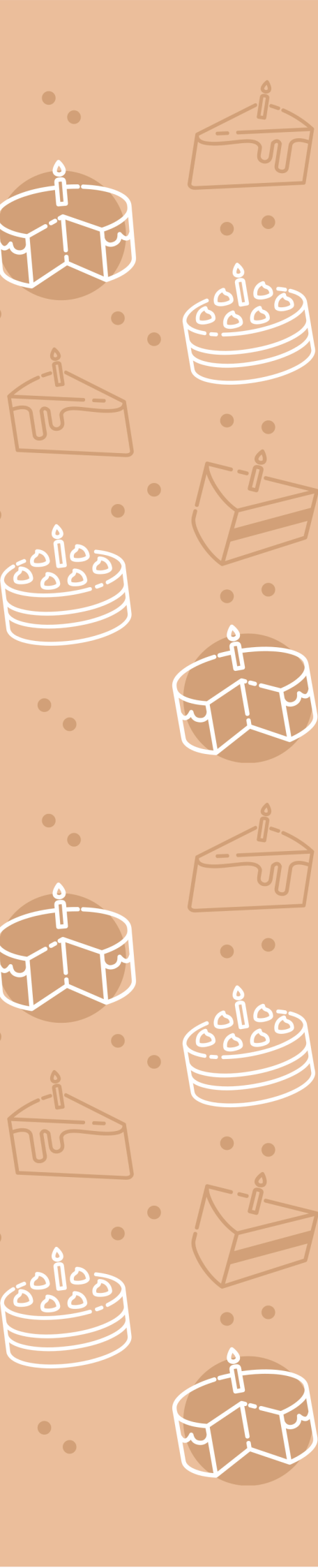
Served with a Sauce of your choice and Toppings.

### **Semmi Freddo • 10,000 MWK**

Ice Cream Cake with Roasted Peanuts.

### **Chocolate Brownie • 10,000 MWK**

Served with Whipped Cream







NKHOTAKOTA  
POTTERY LODGE

# SANDWICH

**CHICKEN MAYO**

**15,000 MWK**

**BACON AND EGG**

**15,000 MWK**

**EGG AND MAYONNAISE**

**15,000 MWK**

**CHEESE AND TOMATO**

**15,000 MWK**

**TUNA AND MAYONNAISE**

**15,000 MWK**

**VEGETABLE**

**15,000 MWK**

**Restaurant Hours**

**5AM-9PM**